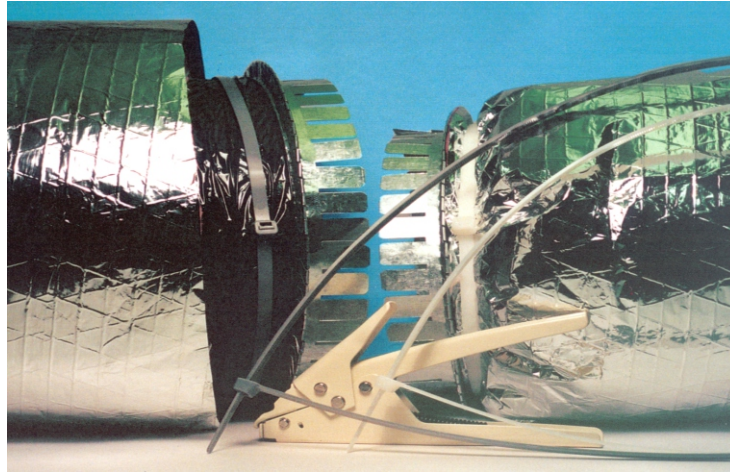


HVAC DUCT STRAPS



HVAC DUCT STRAPS

- Easier - Angled tail provides quicker initial insertion alignment and tail finger grips allow easier handling and tightening
- Safer - Rounded edges provide added safety and eliminates insulation damage
- UL Listed for use with UL non-metallic air ducts and air connectors

ACT Part Number	Color & Material	Length Inch/mm	Width Inch/mm	Thickness Inch/mm	Tensile Strength	Bundle Dia Inch/mm	UL-CSA* Mil-Spec	Per Bag	Per Case
AL-36-175-9-L	Natural Nylon 66	37.25/946.1	.340/8.636	.090/2.286	175lb/778n	11.00/279.40	UL 181B-C MS3367-13	50	500
AL-36-175-0-L	UV Black Nylon 66								
AL-48-175-9-L	Natural Nylon 66	48.56/1233.4	.340/8.636	.090/2.286	175lb/778n	14.50/368.30	UL 181B-C MS3367-16	50	500
AL-48-175-8-L	Gray Nylon 66								
AL-48-175-0-L	UV Black Nylon 66								

* Also rated UL & CSA Type 21 Positioning Device, and UL AH-2

AL-300 Installation Tool



- Durable tension and cut off tool designed for larger cable ties (120 & 175 lb)
- Quickly tensions and cuts off excess strap
- No sharp protrusions to cause snags, cuts, or abrasions to cables, hoses, or user

ACT
ADVANCED CABLE TIES, INC.
 245 Suffolk Lane, Gardner, MA 01440
 Phone: 800.861.7228 - Fax: 978.630.3999
 sales@actfs.com

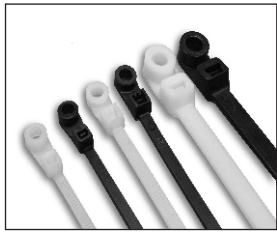


Additional HVAC Products

STANDARD CABLE TIES

ACT Part Number	Color & Material	Length Inch/mm	Width Inch/mm	Thickness Inch/mm	Tensile* Strength	Bundle Dia Inch/mm	UL-CSA Mil-Spec	Per Bag	Per Case
AL-04-18-9-C	Natural Nylon 66	4.12/104.77	0.09/2.41	0.04/1.06	18lb/80n	0.87/22.22	Type 21 MS3367-4	100	10,000
AL-04-18-0-C	UV Black Nylon 66								
AL-05-40-9-C	Natural Nylon 66	5.84/148.33	0.14/3.55	0.04/1.24	40lb/178n	1.43/36.42	Type 21 MS3367-5	100	10,000
AL-05-40-0-C	UV Black Nylon 66								
AL-07-50-9-C	Natural Nylon 66	7.56/192.07	0.18/4.57	0.05/1.32	50lb/222n	1.87/47.62	Type 21S MS3367-1	100	10,000
AL-07-50-0-C	UV Black Nylon 66								
AL-11-50-9-C	Natural Nylon 66	11.25/285.75	0.18/4.57	0.05/1.32	50lb/222n	3.06/77.77	Type 21S MS3367-7	100	5,000
AL-11-50-0-C	UV Black Nylon 66								
AL-14-50-9-C	Natural Nylon 66	14.35/364.49	0.18/4.57	0.05/1.32	50lb/222n	4.00/101.60	Type 21S MS3367-2	100	5,000
AL-14-50-0-C	UV Black Nylon 66								
AL-14-120-9-C	Natural Nylon 66	14.82/376.63	0.30/7.62	0.07/1.93	120lb/534n	4.06/103.12	Type 21S MS3367-3	100	2,000
AL-14-120-0-C	UV Black Nylon 66								

MOUNTING HOLE CABLE TIES



ACT Part Number	Color & Material	Length* Inch/mm	Tensile Strength	Mech'l Strength	Screw Size	Bundle Dia Inch/mm	Per Bag	Per Case
AL-05-30-MH-9-C	Natural Nylon 66	6.12/155.57	40lb/180n	40lb/180n	#8	1.40/35.50	100	10,000
AL-05-30-MH-0-C	UV Black Nylon 66							
AL-07-50-MH-9-C	Natural Nylon 66	8.00/203.20	50lb/222n	45lb/200n	#10	1.87/47.60	100	5,000
AL-07-50-MH-0-C	UV Black Nylon 66							
AL-11-50-MH-9-C	Natural Nylon 66	11.50/292.10	50lb/222n	45lb/200n	#10	3.06/77.70	100	5,000
AL-11-50-MH-0-C	UV Black Nylon 66							
AL-14-50-MH-9-C	Natural Nylon 66	14.50/368.30	50lb/222n	45lb/200n	#10	4.00/101.6	100	5,000
AL-14-50-MH-0-C	UV Black Nylon 66							

*6" COO: CN

WIRE CONNECTORS



ACT Part Number	Color	Per Box	Per Case
AL-ACS-GY-C	Gray	100	1,000
AL-ACS-BL-C	Blue	100	1,000
AL-ACS-OR-C	Orange	100	1,000
AL-ACS-YW-C	Yellow	100	1,000
AL-ACS-RD-C	Red	100	1,000

COO: CN

ACT
ADVANCED CABLE TIES, INC.
 245 Suffolk Lane, Gardner, MA 01440
 Phone: 800.861.7228 - Fax: 978.630.3999
 sales@actfs.com



Advanced Cable Ties carries an extensive line of cable tie products and accessories.

Please visit our website or contact our Sales or Customer Service team for more information.

STANDARD CABLE TIES

MINIATURE - 18 LB SERIES
 INTERMEDIATE - 40 LB SERIES
 STANDARD - 50 LB SERIES
 LIGHT HEAVY DUTY - 120 LB SERIES
 HEAVY DUTY - 175 LB SERIES
 EXTRA HEAVY DUTY - 250 LB SERIES
 MIL-SPEC
 COLORS
 CONVENIENCE PACKAGING

SPECIALTY PACKS, KITS & COLOR ASSORTMENTS

SPECIALTY CABLE TIES

DUAL LOOP SERIES
 MOUNTING HOLE SERIES
 FIR TREE SERIES
 PUSH MOUNT & PUSH MOUNT WING
 RELEASABLE - EXTENDED PAWL & TAB
 AIR HANDLING
 AIR HANDLING MOUNTING HOLE
 IDENTIFICATION & FLAG TIES, ID PLATES
 BEADED
 DOUBLE HEAD

ENGINEERED MATERIALS

NYLON 12 - SOLAR
 COLD WEATHER
 HEAT STABILIZED
 IMPACT RESISTANT
 METAL DETECTABLE
 STAINLESS STEEL - UNCOATED & COATED

TOOLS

REMOVAL
 INSTALLATION / TENSION

CABLE TIE ACCESSORIES

MOUNTING BASES
 MOUNTS
 CLAMPS

WIRE ROUTING & ABRASION PROTECTION

SPLIT LOOM
 SPIRAL WRAP

CONDUCTIVITY

TERMINALS & WIRE CONNECTORS